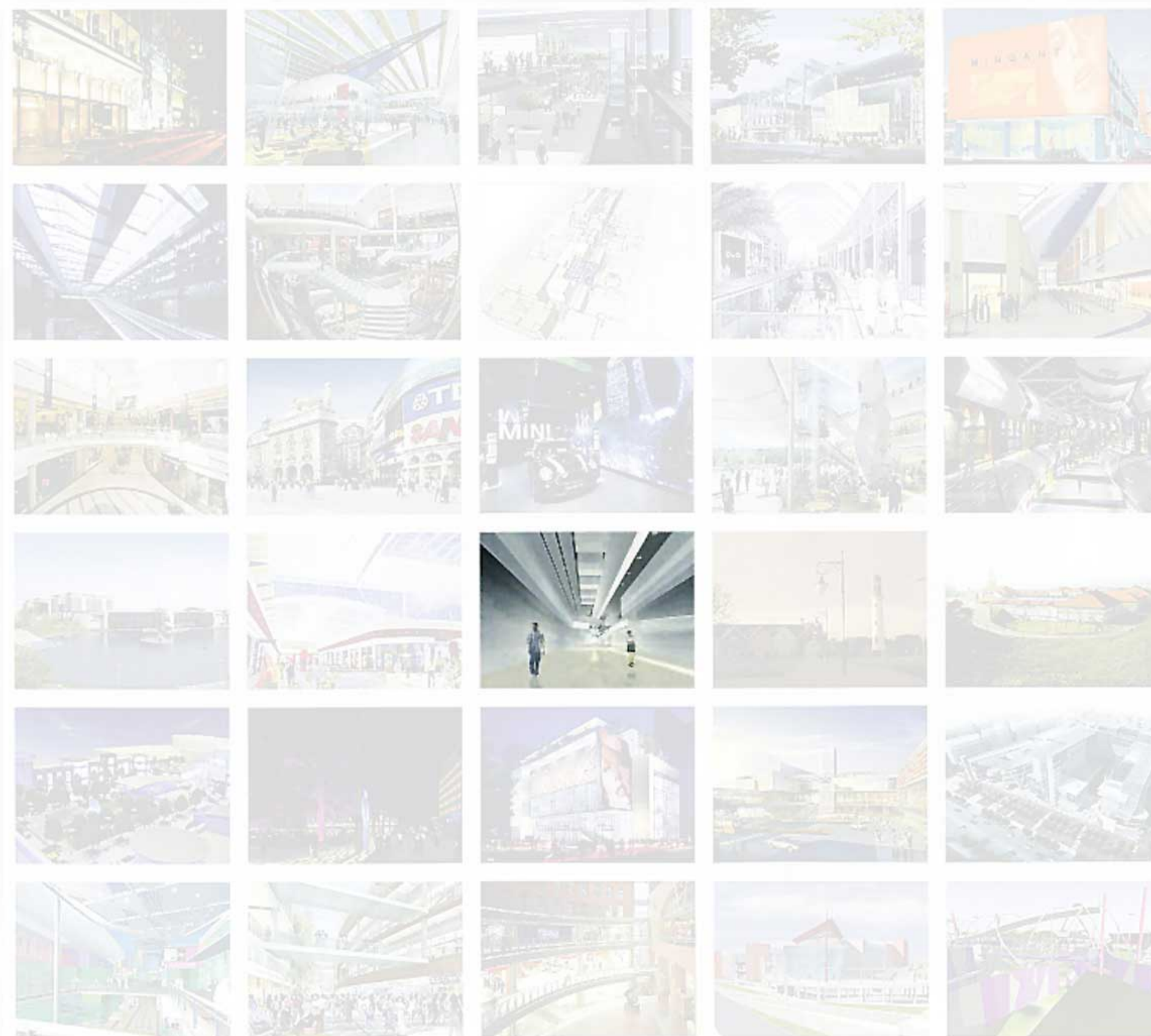


Shopping centre *Le Grange* Piedimonte S.G. (FR), Italy  
Plaza Retail Future Projects Awards 2005

Plaza  
**RETAIL FUTURE PROJECT**  
AWARDS & DINNER AT MAPIC, CANNES

new ideas new visions



November 16th, 2005

Supported by:

**BCSC Plaza** **mapic**

Sponsored by:

**cyril sweett** **Lend Lease** **ZUMTOBEL STAFF** **LandSecurities**  
Lend Lease Retail



**Chapman Taylor**  
Architetti S.r.l.

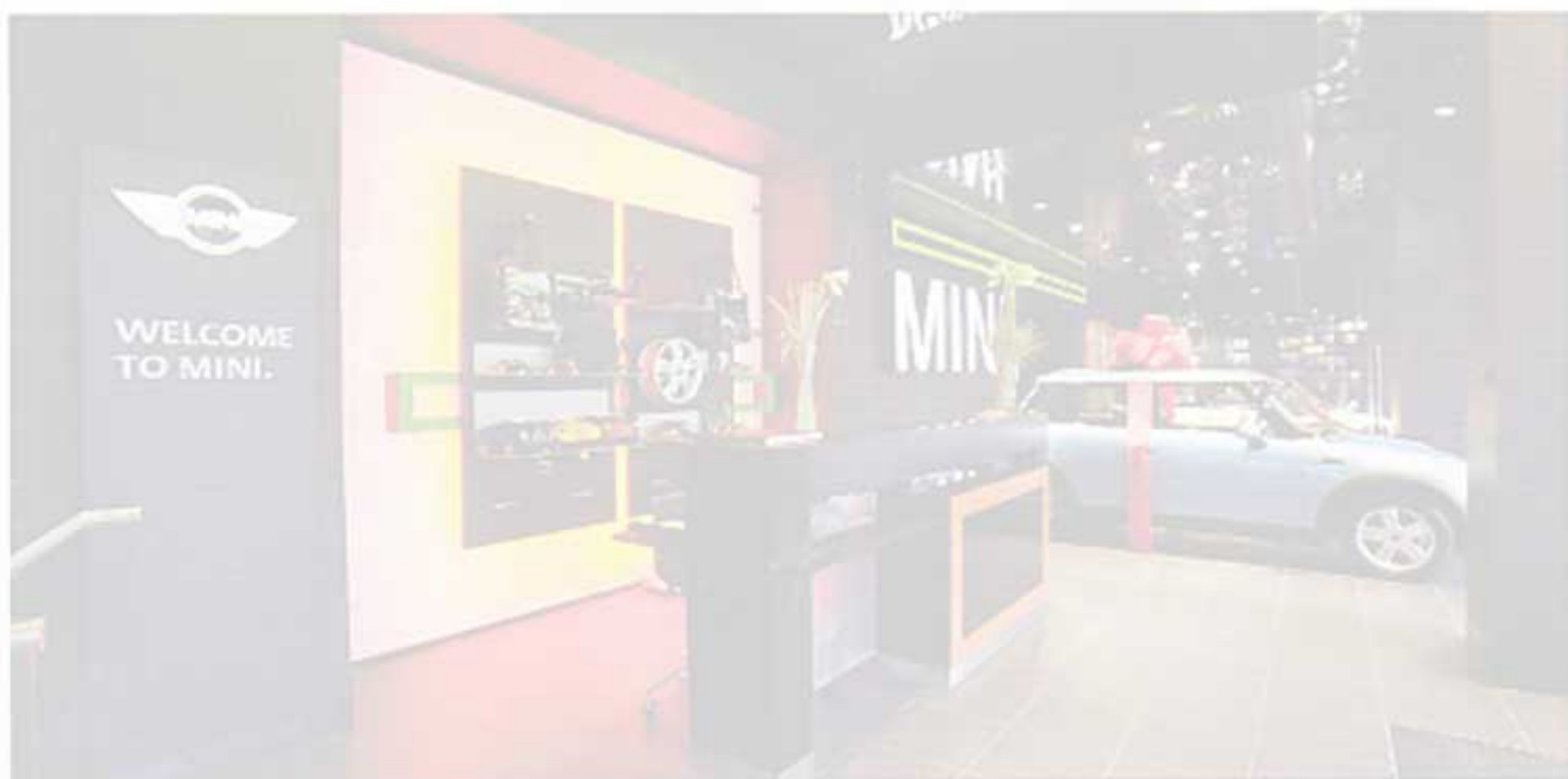




## dpa lighting

For BMW Group at Mini Showroom, Park Lane, London, UK

dpa lighting consultants were commissioned by BMW Group to design the lighting for the quirky interior of the flagship Mini showroom designed by Stubbs Rich Architects. They arranged self illuminated signage which contrasts with the black walls, used high output metal halide spotlighting, adjustable recessed discharge downlights in a uniform configuration which gives flexibility for the displays which are regularly changed and light the lavatories using Mini indicator lamps in a grid configuration on the ceilings.



## Chapman Taylor Architetti

For SERCOM at Le Grange Shopping Centre, Cassino, Italy

The striking exterior of the Le Grange shopping centre scheme is made up of a mix of metal panels, full height glazing and yellow aluminium slatting - actually box sections some of which contain neon strip lighting. The 24,652 sq m centre will consist of one level of top-lit retail space using a modified racetrack layout containing 65 shops, a hypermarket and a food court with 1,758 spaces in an underground car park.

